

# GN 192.1 | T-shaped connecting clamps

for linear actuators, aluminium



- 1
- 2
- 3
- 4
- 5
- 6
- 7
- 8
- 9
- 10
- 11
- 12
- 13
- 14
- 15
- 16
- 17
- 18
- 19

## MATERIAL

Aluminium, epoxy resin coating, RAL 9005 black colour, matte finish.  
AISI 304 stainless steel screws and nuts.

## STANDARD EXECUTIONS

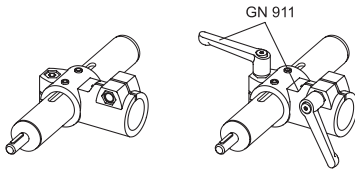
- **GN 192.1-B-B**: without sliding bushing.
- **GN 192.1-G-B**: with polyamide based (PA) or polytetrafluoroethylene based (PTFE) technopolymer sliding bushing (d1).

## FEATURES AND APPLICATIONS

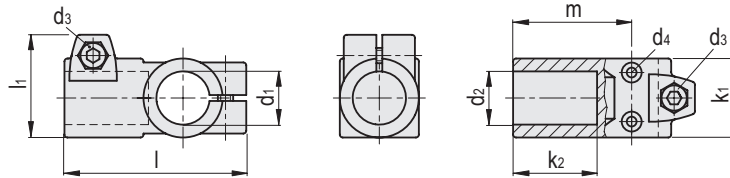
GN 192.1 clamping connectors can normally be matched with the linear actuators.

By clamping the guide hole d1 it is possible to adjust the actuator positioning and to lock the slider after having set up the final position.

The clamping screws d3 may be replaced by clamping kits GN 911 (see page 1372).



Conversion Table 1 mm = 0,039 inch	
d1	
mm	inch
30	1.17
40	1.56
50	1.95
60	2.34



## GN 192.1-B-B



Codice	Descrizione	d1#	d2	d3	d4	k1	k2	l	l1	m	d3 Kit di serraggio	Δ
GN.52706	GN 192.1-B30-B30-40-2-S	30	30	M 8	M 4	40	42.5	92	52	60	GN 911-63-M8-25 / GN 911-78-M8-25	185
GN.52707	GN 192.1-B30-B30-56-2-S	30	30	M 10	M 4	56	62	130	68	90	-	661
GN.52716	GN 192.1-B40-B40-56-2-S	40	40	M 10	M 5	56	62	130	68	90	GN 911-78-M10-35 / GN 911-92-M10-35	450
GN.52717	GN 192.1-B40-B40-65-2-S	40	40	M 10	M 5	65	75	148	77.5	103	GN 911-92-M10-50	922
GN.52726	GN 192.1-B50-B50-65-2-S	50	50	M 10	M 6	65	75	148	77.5	103	GN 911-78-M10-50 / GN 911-92-M10-50	620
GN.52736	GN 192.1-B60-B60-80-2-S	60	60	M 10	M 8	80	80	177	92	125	GN 911-78-M10-50 / GN 911-92-M10-50	1260

## GN 192.1-G-B

Codice	Descrizione	d1##	d2	d3	d4	k1	k2	l	l1	m	d3 Kit di serraggio	Δ
GN.52746	GN 192.1-G30-B30-40-2-S	30	30	M 8	M 4	40	42.5	92	52	60	GN 911-63-M8-25 / GN 911-78-M8-25	185
GN.52747	GN 192.1-G30-B30-56-2-S	30	30	M 10	M 4	56	62	130	68	90	-	661
GN.52756	GN 192.1-G40-B40-56-2-S	40	40	M 10	M 5	56	62	130	68	90	GN 911-78-M10-35 / GN 911-92-M10-35	450
GN.52757	GN 192.1-G40-B40-65-2-S	40	40	M 10	M 5	65	75	148	77.5	103	GN 911-92-M10-50	922
GN.52766	GN 192.1-G50-B50-65-2-S	50	50	M 10	M 6	65	75	148	77.5	103	GN 911-78-M10-50 / GN 911-92-M10-50	620
GN.52776	GN 192.1-G60-B60-80-2-S	60	60	M 10	M 8	80	80	177	92	125	GN 911-78-M10-50 / GN 911-92-M10-50	1260

Tube connectors

# Foro senza bussola di scorrimento.  
## Foro con bussola di scorrimento.